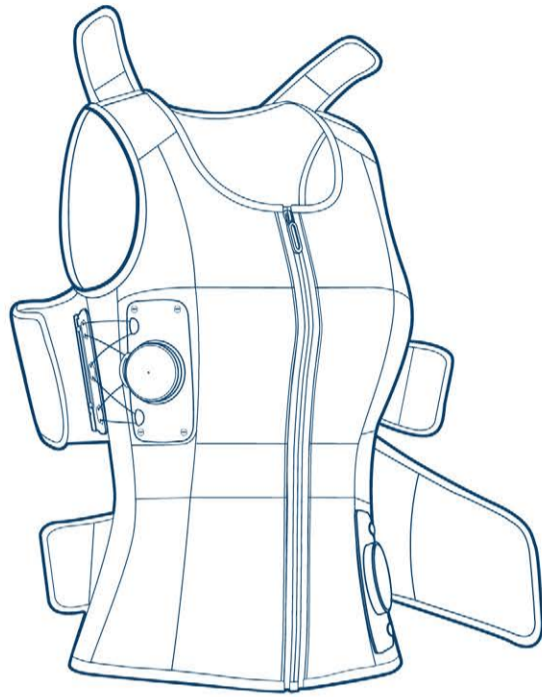


VEST TYPE PRODUCT FOR SCOLIOSIS
Made with beautiful, comfortable, and functional material to improve movement and quality of life.

SPINE CORRECTION SOLUTION



! PRECAUTIONS

Please read the following precautions before using the product.

PRECAUTIONS FOR USE

- A. Wear the Spinamic device under the healthcare provider's instruction & prescription.
- B. Please refer to the instruction manual enclosed with the product to use the components in accordance with the usage purpose and region of symptoms.
- C. If you have breathing difficulties or digestion problems while wearing the product, remove the product immediately and consult your healthcare provider.

PRECAUTIONS FOR HANDLING

- A. Keep the product away from flame or heat. The product may burn.
- B. Due to material characteristics, repetitive or intense friction may cause fuzz or shine of the surface.
- C. If the surface touches or rubs against rough objects, it may cause fluff or fraying.

WASH & CARE INSTRUCTIONS



- A. Please wash it alone with cold water for a short time since the product is not machine washable.
- B. If you sweat a lot, please wash the product immediately.
- C. Do not use bleach or immerse the product in detergent for more than 10 minutes.
- D. Please dry in the shade.
- E. Machine drying (heat drying) and ironing may damage the product.

SPINAMIC APPLICATION (IOS, ANDROID) ON VNTC WEBSITE ▶

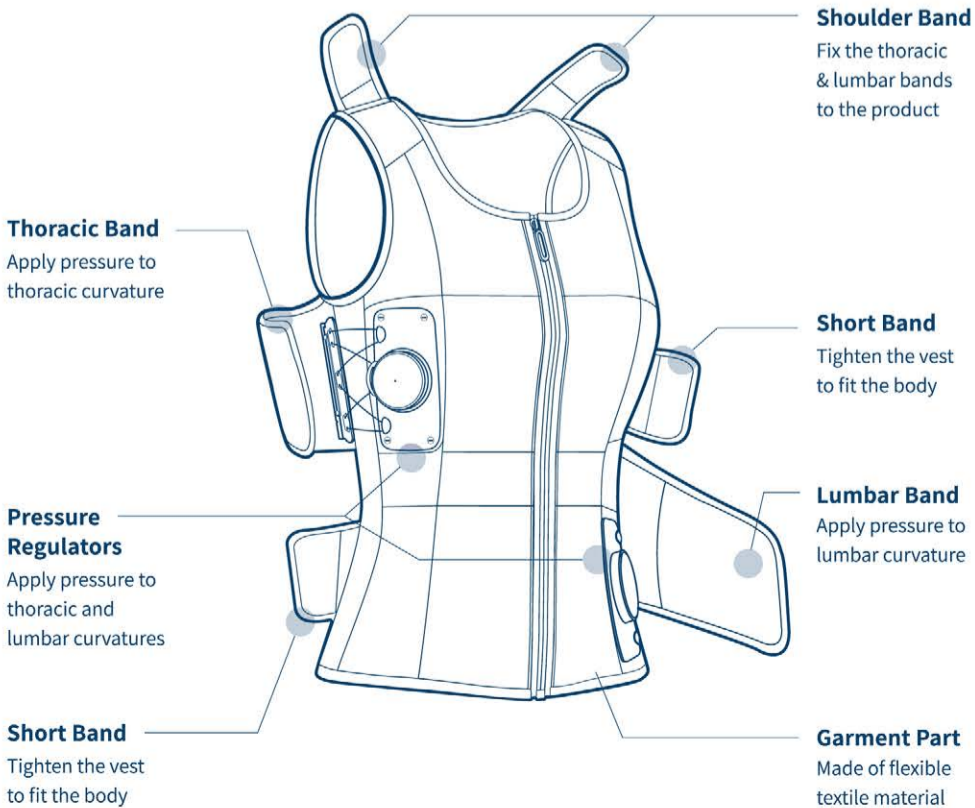
- A. Push notifications to remind patients to wear the Spinamic brace.
- B. Provides a remote patient management solution for physicians.
- C. Display the wearing time of the brace to improve patient compliance.



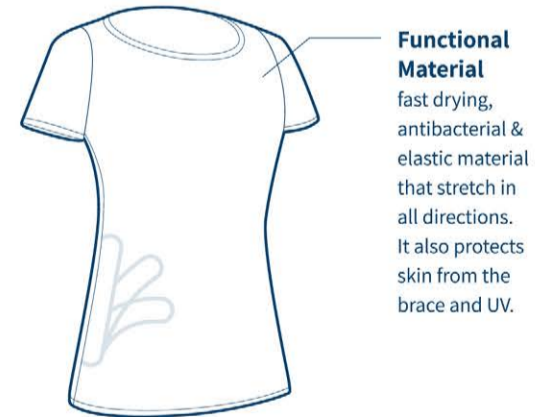
PRODUCT COMPONENT

Spinamic is an all-in-one vest type product that can be worn over a light inner-wear shirt. The thoracic & lumbar parts are equipped with pressure regulators with hump pads and compression bands that compress the back humps when anterior flexion of the spine occurs.

SPINAMIC BRACE Actual brace with the combination of the hard parts (the pressure regulators) and the garment part made of textile to increase patient mobility.

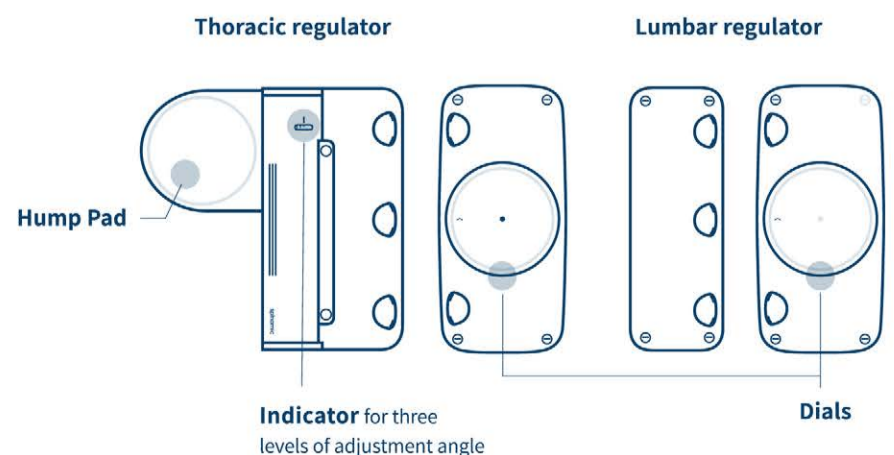


INNER-WEAR Referred to as the [soft part], it increases patient mobility with light and comfortable material.



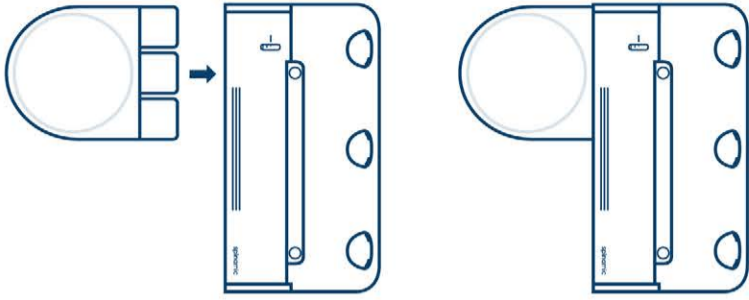
Functional Material
fast drying, antibacterial & elastic material that stretch in all directions. It also protects skin from the brace and UV.

PRESSURE REGULATOR The mechanical part made of the plastic material, referred to as the [hard part].

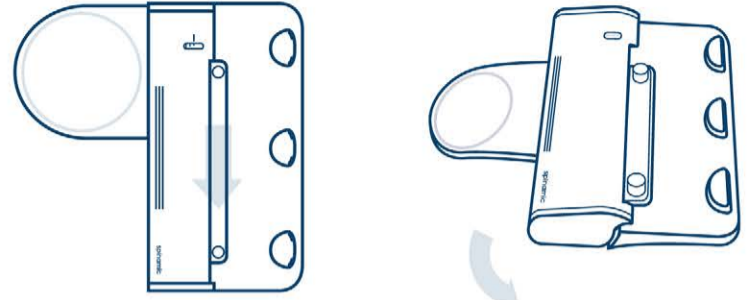


THE ORDER OF USE

1 ATTACH AND PLACE THE HUMP PAD
 Insert the hump pad into the slots on the backside of thoracic pressure regulator and place the hump pad according to the patient condition. When detaching the hump pad, pull it in the opposite direction of the device.



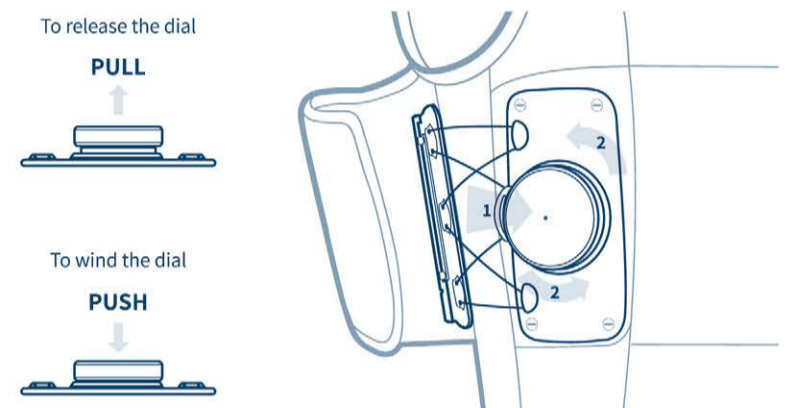
2 ADJUST THE ANGLE OF THE PRESSURE REGULATOR
 Pull the center slider of the thoracic pressure regulator and hold it while adjusting the angle of the regulator to the degree of the patient's curvature.
 *Change the settings of the regulators only when given the doctor's guidance.



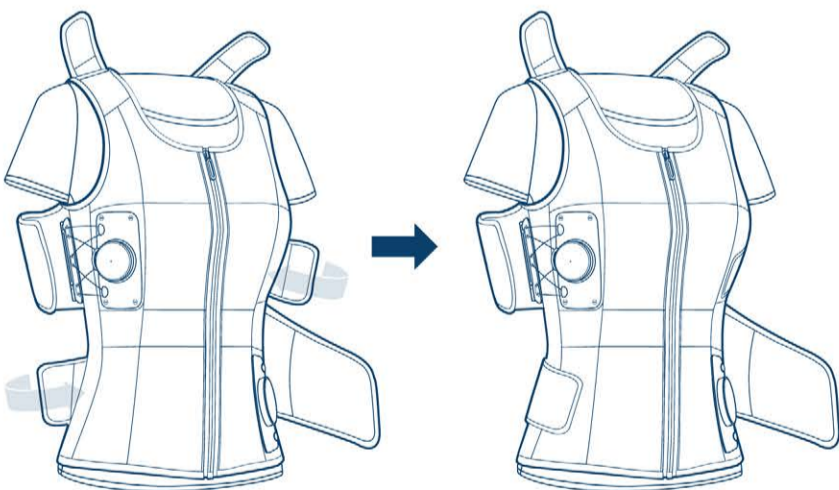
3 PUT ON THE BRACE
 After wearing the provided inner-wear, wear the vest-type spinamic brace.



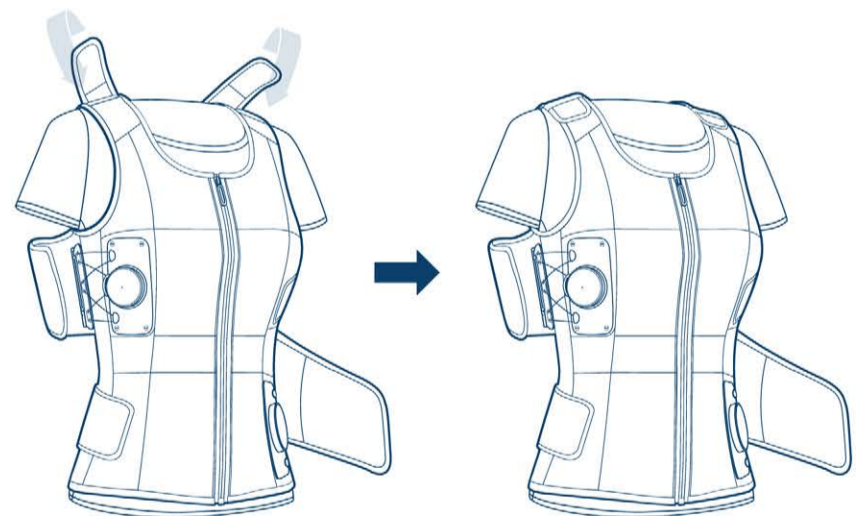
4 OPERATE DIALS TO APPLY PRESSURE
 Press the dials on thoracic and lumbar pressure regulators until they click, then turn them clockwise to tighten the brace and apply pressure. To loosen the brace, pull the dials up until they click and pull the finger sized hook to unwind the wire.



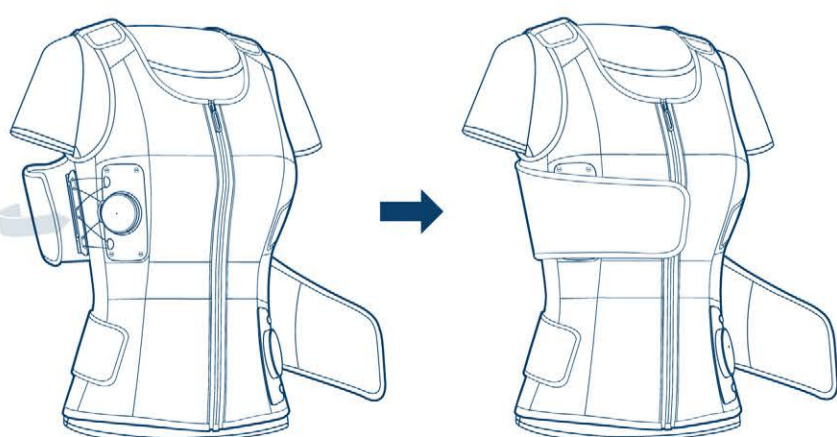
5 TIGHTEN THE SHORT SIDE BANDS
 Tighten the short bands on the sides by pulling it toward the body.



6 STICK THE SHOULDER BANDS
 Put the shoulder bands through the shoulder rings and stick them to the brace.



7 TIGHTEN THE WIDE THORACIC BAND
 Tighten the wide thoracic band over the chest by pulling it forward.



8 TIGHTEN THE WIDE LUMBAR BAND
 Tighten the wide lumbar band over the lower back by pulling it forward.

